

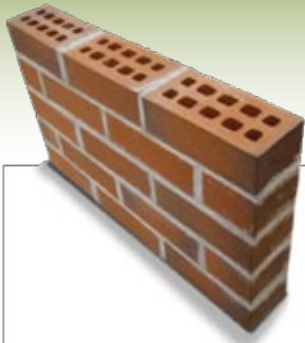
# ARCHITECTURAL THIN BRICK IS GREEN BRICK

METROBRICK® manufactures TBX Grade Architectural Thin Brick to be used with the following systems: Precast Concrete Panels, Tilt-up Concrete Panels, Prefabricated Metal Panels, Field Applied Systems/Applications and Cast in Place Concrete Elements.

## THIN BRICK USES 80% LESS RAW MATERIALS

FULL BRICK

METROBRICK®



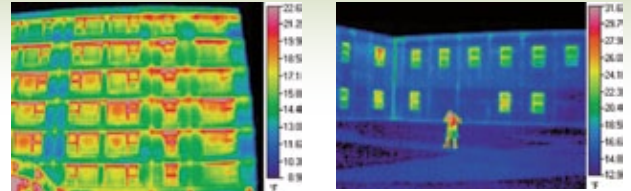
80% of full brick is never seen.

Thin brick allows for more building options like added insulation and more interior space.

## MORE ROOM FOR INSULATION AND BETTER PERFORMANCE

FULL BRICK

METROBRICK®



Are you losing energy through your walls? METROBRICK® walls allow for **continuous insulation** and create lower utility bills.  
*Images provided by Thermomass Insulation Systems.*

## LESS RAW MATERIALS

FULL BRICK

METROBRICK®



METROBRICK® uses **1/5 the amount of material** needed to manufacture the same surface coverage as full brick.

## LESS CONSUMPTION OF NATURAL GAS

FULL BRICK

METROBRICK®



To fire 700,000 pieces, METROBRICK® uses nearly **1/5 the amount of natural gas** than the same surface coverage of full brick.

## FEWER TRUCKS ON THE ROAD

FULL BRICK

METROBRICK®



METROBRICK® requires **8 fewer semi trucks** to deliver 25,000 sq. ft. of modular surface coverage as compared to full brick.



**METROBRICK®**  
ARCHITECTURAL THIN BRICK

# FEATURES



**DOVETAILED BACK.**  
Serves as a fastener for sure bond.



**STRICT SIZING**  
+0"-1/16" (brick 8" or less) and  
+0"- 3/32" (brick between 8"  
and 12"



**EXACTING CORNERS**  
All corners meet strict  
standards before shipping.

# OPTIONS

When you combine color and finish options with METROBRICK® you have at least 102 choices in each size.

COLORS	FINISHES	SIZES
<p>METROBRICK® is available in a wide variety of through-the-body earth tones. Choose from single tone, range colors, blends and ironspot.</p>	<p>Smooth      Traditional</p> <p>Velour      Ironspot Ironspot available in all finishes</p>	<p>Modular 2 1/4" x 7 5/8" Closure 3 5/8" x 7 5/8" Norman 2 1/4" x 11 5/8"</p> <p>Modular Corner 2 1/4" x 7 5/8" Closure Corner 3 5/8" x 7 5/8" Norman Corner 2 1/4" x 3 5/8" x 11 5/8"</p> <p>Modular Edge Cap 2 1/4" x 3 5/8" x 7 5/8" Closure Edge Cap 3 5/8" x 3 5/8" x 7 5/8" Norman Edge Cap 3 5/8" x 2 1/4" x 11 5/8"</p> <p>Utility 3 5/8" x 11 5/8" Utility Corner 3 5/8" x 3 5/8" x 11 5/8" Utility Edge Cap 3 5/8" x 3 5/8" x 11 5/8"</p> <p>Custom sizes also available.</p>

# THIN BRICK SYSTEMS

DIRECT APPLIED	FIELD APPLIED	TILT-UP	PRECAST

P.O. Box 9240 Canton, Ohio 44711  
1-888-325-3945  
Fax: 330-484-3584  
e-mail: info@ironrock.com  
www.metrothinbrick.com

