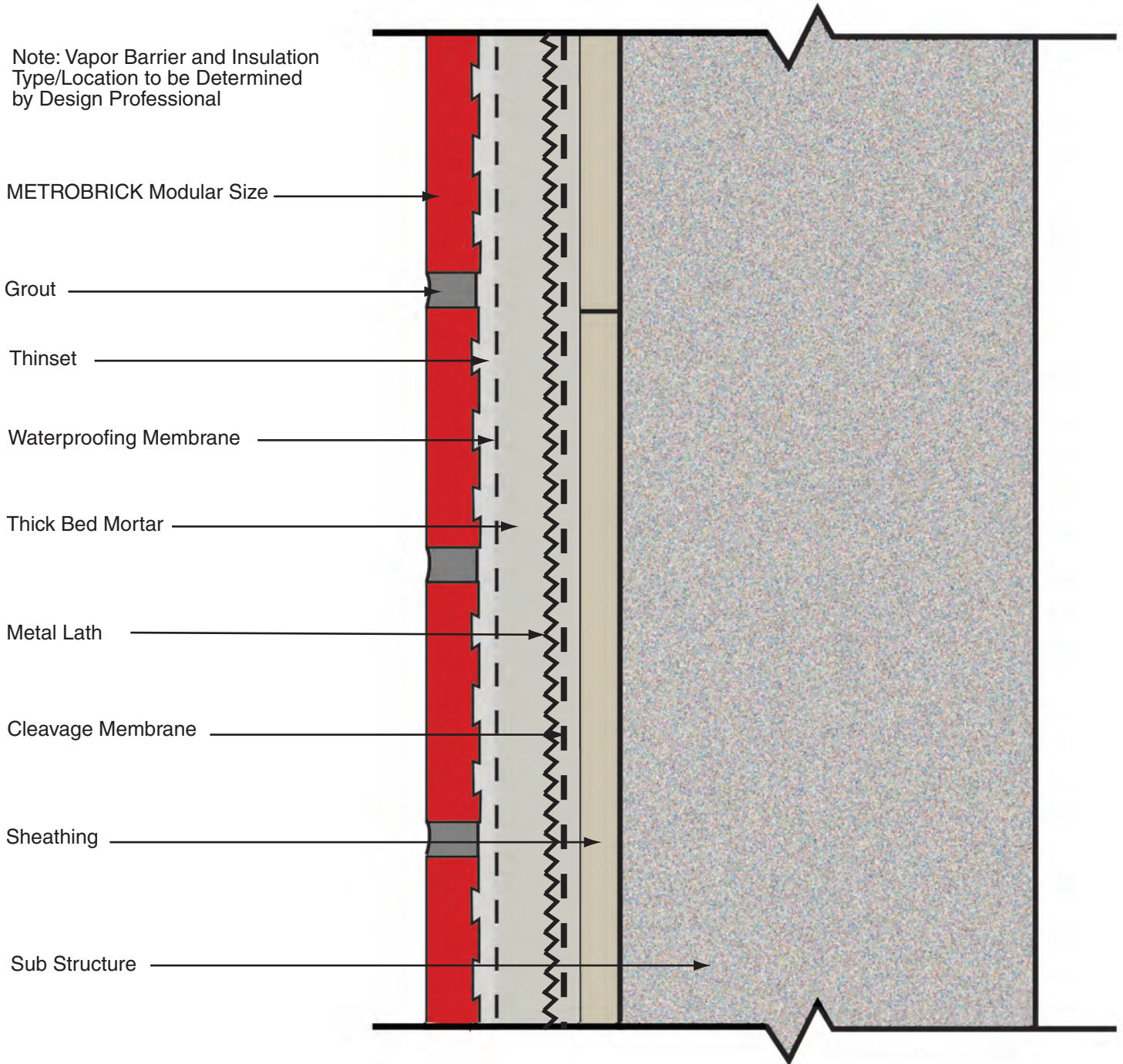


Note: Vapor Barrier and Insulation Type/Location to be Determined by Design Professional

Note: Detail drawing for reference only. METROBRICK Architectural Thin Brick should be installed according to the Tile Council of North America Standards, ANSI standards and local building codes. Use only reputable installers and the correct installation products to suite the application. METROBRICK accepts no liability for the end use of this detail.

©2008 METROBRICK<sup>®</sup>

Note: Vapor Barrier and Insulation Type/Location to be Determined by Design Professional



Scale: 3/4

Note: Detail drawing for reference only.  
METROBRICK Architectural Thin Brick should be installed according to the Tile Council of North America Standards, ANSI standards and local building codes. Use only reputable installers and the correct installation products to suite the application. METROBRICK accepts no liability for the end use of this detail.

©2008 METROBRICK®